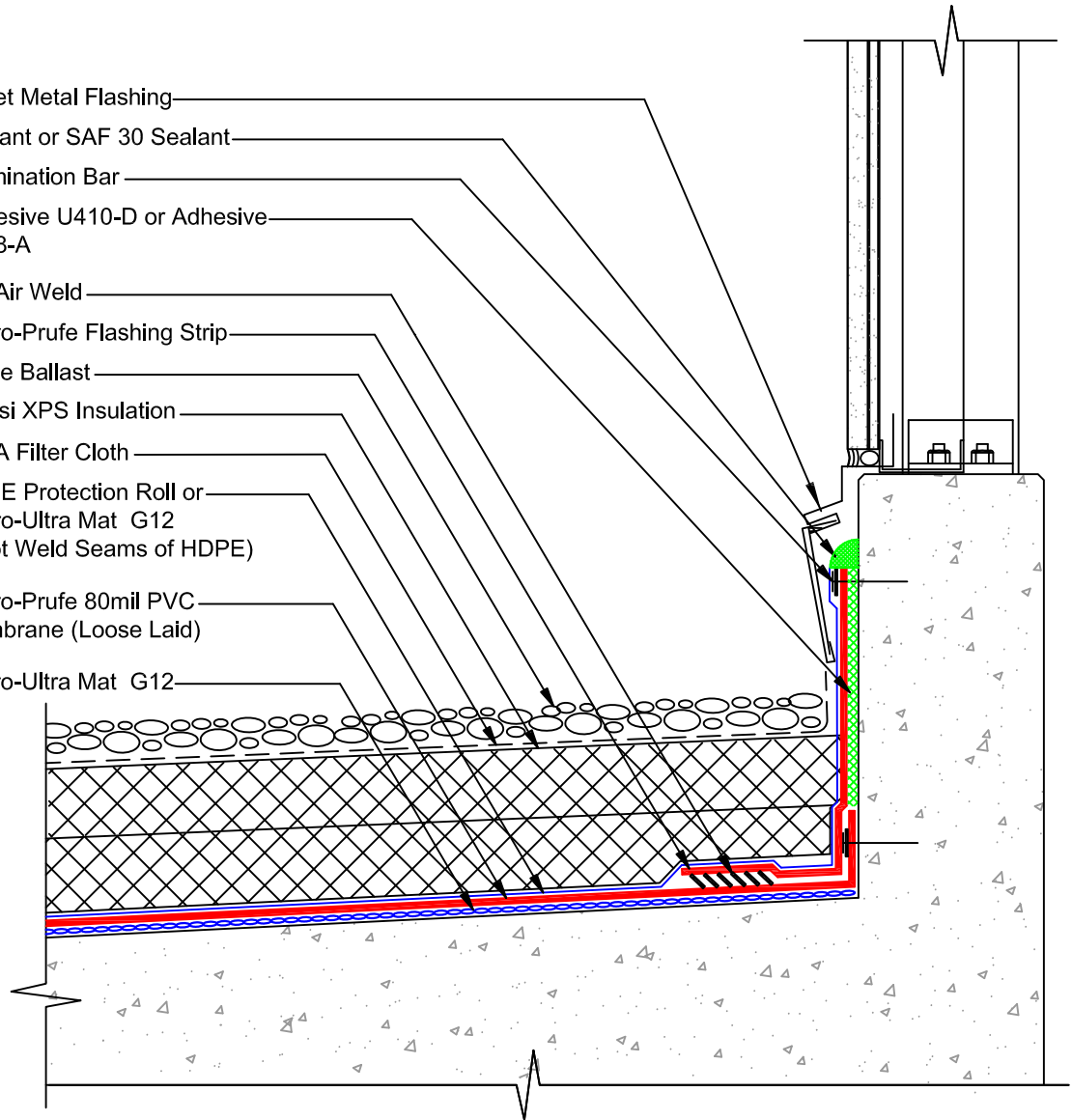


- Sheet Metal Flashing
- Sealant or SAF 30 Sealant
- Termination Bar
- Adhesive U410-D or Adhesive U148-A
- Hot Air Weld
- Hydro-Prufe Flashing Strip
- Stone Ballast
- 40 psi XPS Insulation
- IRMA Filter Cloth
- HDPE Protection Roll or Hydro-Ultra Mat G12 (Spot Weld Seams of HDPE)
- Hydro-Prufe 80mil PVC Membrane (Loose Laid)
- Hydro-Ultra Mat G12



DETAIL NAME:

IRMA ROOFING
@ PARAPET

Scale:	Date:	Drawing #:
NTS	12-01-15	HP-IR-002